


ATLANTIS[®]
infinite headwear



ACTIVE
SPORTSWEAR
FOR OUTDOOR PERFORMANCE



OEKO-TEX

An international testing for textile products with the aims to sensitize the industry to the responsible use of the chemicals in the long term and on a global scale.



MADE IN EUROPE

Produced and manufactured in Europe.



STRETCHABLE FABRIC

It is made by stretchable fabric, in which the main material is combined with a few percentage of elastane, for an comfortable and perfect fitting so it doesn't move around.



WASHABLE

The beanie are machine-washable making them highly practical and convenient.



MICROFLEECE INSIDE

A fleece lining to keep you warm and dry in rigid cold weather conditions.



STOWABLE

You can fold it and keep in your pocket in case of need.



NEXT-TO-SKIN COMFORT

Keep your comfort on point with our styles which are comfortable next to skin, quite and slides easily over your head and neck.



BREATHABLE

Fast moisture evaporation.



BACTERIOSTATIC

The positive charge of the silver ions finishing has bacteriostatic effects on this fabric, keeping the product fresh for longer use.



SUBLIMATION PRINT

Suitable for customize graphics, patterns and logos in CMYK.



ACTIVE SPORTSWEAR COLLECTION

Make it original with your own logo
thanks to all over sublimation.

QUANTITY:

MOQ 200 pieces each style

SAMPLE TIME:

10 days

EXWORKS WAREHOUSE

25 days (from sample's approval)

PACKING

Single polybag



NECKWARMER

BEANIE

HEADBAND



Scan here to read more information.

NECKWARMER (LAB2413)

- Active Sport Neckwarmer
- Main fabric: 80%polyester – 20%elastane
- Size 26 *36 cm
- 42 gr.
- Microfleece lining
- Contrast stitchings

BEANIE (LAB2411)

- Active Sport Beanie
- Main fabric: 80%polyester – 20%elastane
- Size 27*20 cm
- 28 gr.
- Microfleece lining
- Contrast stitchings

HEADBAND (LAB2312)

- Active Sport Headband
- Main fabric: 80%polyester – 20%elastane
- Size 24*10 cm
- 12 gr.
- Microfleece lining
- Contrast stitchings



Contrast stitchings



Microfleece lining

A close-up, profile view of a woman with curly hair, wearing a blue and green outdoor jacket and a blue headband with a yellow pattern. She is looking to the right, and her hand is near her face, possibly adjusting the jacket's collar. The background is a solid dark blue.

CREATE YOUR 100% BESPOKE STYLE
SEND US YOUR TEMPLATES OR ASK
FOR OUR DESIGNERS FULL
GRAPHIC SUPPORT

WE HAVE SO MANY SOLUTIONS
TO MAKE IT ORIGINAL



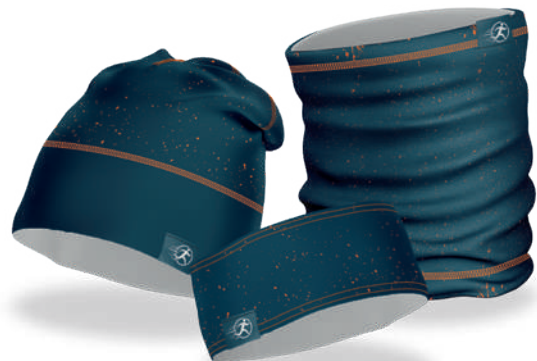
SUGGESTIONS



Solid color
Discreet logo
Tone sur tone stitchings



All over sublimation
Contrast stitchings



2 color sublimation
Contrast stitchings
Loop label on side



**WE'LL KEEP YOU
WARM ANYTIME,
ANYWHERE**

**CONTACT OUR
HEADWEAR
SPECIALIST**



atlantisheadwear.com

ATLANTIS
infinite headwear